

# CUSTOM CABINETS

*& Accessory Guide*



Our Experience. Your *Signature.*

# *Celebrating Over 60 Years of Innovation, Community & Family*



What began in a small garage in 1960 in rural De Pere, has flourished to become Northeastern Wisconsin's premier manufacturer of custom cabinetry. Valley Cabinet has built their business by serving homeowners and professional home builders, providing the highest standards of quality – no compromises. Our motto: "Great customer service, exceptional quality at a fair price", are more than just words, it is the foundation of the company's mission. Custom Cabinetry is the perfect fit for your space, and for the way you live. Explore the possibilities. **Our Experience. Your Signature.**

# YOUR DREAMS ARE CUSTOM YOUR CABINETRY SHOULD BE TOO.

Incorporate style and function into every room of your home with Custom Cabinetry. We have solutions to accommodate every taste and budget.

If you have to work or study at home, efficiency is key - having the right space will help you get done quicker so that you have more time to play.

WORK /  
STUDY

STORAGE

Display it or hide it, you have stuff - let's make sure it has a home. Organization makes work & play that much better!

I never thought of that? We did! Let our experience help guide you on your decisions. Designed and built for better living.

FAMILY  
LIVING

Express Yourself and let your home reflect your personality & lifestyle.

PERSONAL  
STYLE

VE

It only works, if it works for you! We get to know you and your goals for your space. Designed for your needs, built to last.

FUNCTION

Let Custom Cabinetry create a cohesive vibe, incorporate built-in features throughout your home. Don't let your kitchen have all the fun.

DINING &  
LIVING

ENTERTAIN

Whether your strength is making a wonderful meal or making the call to order it in - enjoying with family & friends is the key. We'll help you design the space - the invites are up to you!



## *Work with our team*

Ideas are not always born here, but they are developed here. You may have specific design ideas, or you may want some guidance. Whatever your need, a visit to your local Valley Cabinet design center is more than a walk through a showroom. You'll be greeted by a design team member, not a salesperson, whose full-service focus is to first listen to your needs. Then, he/she will help you envision your signature space, whether that's for new construction or a remodeling project.

- Get design expertise and space planning advice
- See our wide array of custom finishes, woods, design details and convenience features
- Review stunning countertop choices, trending colors and, of course, the finest custom cabinetry

...all in one convenient location

*“Every person that has come into my kitchen is amazed at the transformation that the new cabinets make. The cabinets are a work of art. They are so well constructed, and the finish is gorgeous. I never even imagined my kitchen would be this nice.”*

# Showrooms

With a combined over 14,000 square feet of dedicated space, there is plenty to explore. Each of our showrooms offer unique designs that span design interests. Seeing is believing and is incredibly helpful as you visualize your project. Ideas in action, join us for a tour.

Appointments are appreciated.

## DE PERE / GREEN BAY DESIGN CENTER & MANUFACTURING FACILITY

845 Prosper Road, De Pere, WI  
920.336.3174

## NEENAH DESIGN CENTER

970 American Drive, Ste. 1B, Neenah, WI  
920.383.5580

## GERMANTOWN DESIGN CENTER

W189 N11100 Kleinmann Drive, Suite 104, Germantown, WI  
262.345.5481

## STURGEON BAY DESIGN CENTER

966 Green Bay Road, Sturgeon Bay, WI  
920.743.2243

Get started early with our online virtual tours as well as featured galleries of our work.

[VALLEYCABINETINC.COM](http://VALLEYCABINETINC.COM)

An extensive collection of cabinetry & accessories  
on display. Solutions for the entire home.

Explore | Experience | Select



# The Anatomy of Quality Cabinetry

## Design

At Valley Cabinet, design incorporates the flow and function of your space along with the aesthetic. It's the connection we create with our customers, listening & learning and then combining those

ideas with our experience to create your one-of-a-kind signature. From beginning to end, it's about you and the dreams you have for your home. We are with you every step of the way.

## Construction

### **We Cut Miters, Not Corners.**

All cabinets are built using a face frame construction, adding more strength and integrity to the cabinet. Our face frames are attached using tongue and groove method. This adds even more strength and durability along

with eliminating the need for face nailing through the exterior of the cabinet.

Valley Cabinet construction methods give our cabinets an edge over faceless cabinet construction.





## Finishes

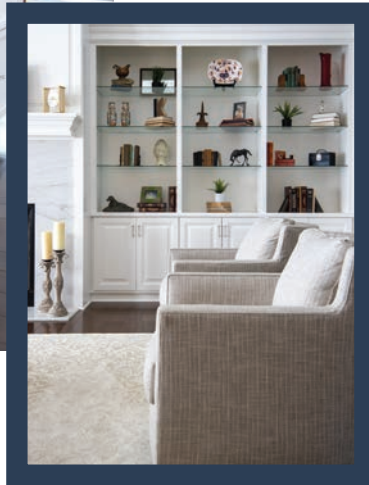
Your cabinets aren't complete until Valley Cabinet experts apply our meticulous 4-step finish process. We'll even formulate a custom finish to meet your exact needs.

- Stains are hand applied for even tones & coverage
- Ovens are utilized for a controlled cured finish between coats
- Doors and drawers are hand sanded and inspected before finish coats are applied
- Only high-solids quality finishes are used to maximize color uniformity and durability providing the best protection from aging, scuffs, dents and moisture.

Glazes, Distressing Accents and Heirloom Finishes can also be applied adding more detail to the Custom aspects of our products and services.

### VALLEY CABINET WARRANTY

Valley Cabinet Inc. guarantees all of our manufactured products to be free from defects in material and workmanship for 5 years from the date of purchase.



### Beautiful Built-Ins

Customize All the Rooms  
in Your Home

## Accessorize

Make the most of your space with customizable inserts, dividers and pull-outs for your drawers and cabinets.

With adjustable configurations, your storage can be easily modified to fit the latest addition to your kitchen gadgetry or a treasured collection.

*Colors & Textures*



*Evergreen*



*Spicewood on Maple*



*Charcoal on Red Oak*



*Driftwood on Rift Cut White Oak*



*On Trend*



*Linen on Rift Cut White Oak*



*Rainforest*





*Cascade on  
Rift Cut White Oak*

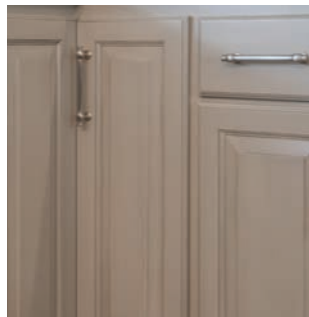


*Lavastone on  
Rift Cut White Oak*



*Charcoal on Hickory*

## *Enhance*



**Get Creative:** Clear to Rustic Species | Distressed Accents | Custom Stains, Paints & Glazes | Style Combinations - Species, Finishes, Door & Drawer Styles. Traditional to Contemporary styles are on display in our showrooms - Explore the possibilities our experienced design team is here to help.





# Made To Order

Our employees are at the heart of our operations. It takes good people, with training and skill to build custom cabinetry. Quality happens in the details, and shortcuts are not part of our process. We are proud of our heritage of doing things the right way when it comes to the products we produce and how we serve our customers.

We are fortunate to live & work in an area rich with natural resources, products are sourced responsibly and locally when possible. We follow sustainable practices and promote environmental responsibility in the sourcing of materials and in our manufacturing process. Not only is it good for our community, it's good for local businesses. Designed & built in NE Wisconsin - 60+ years of serving our community through our products & services, our employment & training, and our philanthropy. We are here to stay!

## Keeping it Local



*Inset*

*Partial Overlay*

*Full Overlay*

# Choosing Your Style

While The Choices are Overwhelming,  
the Process Doesn't Need to Be.

Hello- That is why we are here! The options are literally endless, but we can help you to dial in the elements that will formulate your unique design and fit your budget. Bring in your ideas and we'll share some of ours - together we'll create your Signature Look.

*Frame*

**INSET:** Doors and drawers rest flush with the framed face of the cabinets.

**PARTIAL OVERLAY:** Door and Drawer Fronts partially overlap the framed face of the cabinets. Standard overlap is 1/2" which allows spacing between openings.

**FULL OVERLAY:** Door and Drawer Fronts fully overlap the framed face of the cabinets.

**DRAWERS FEATURE DOVETAIL CONSTRUCTION FOR STRENGTH, STYLE AND DURABILITY.**





# Doors & Drawers

## Countless Configurations

There are simply too many to list! Door and Drawer styles are truly custom, you select the species, panel & edge profiles, configurations and finishes. We can match to an existing style or create something unique.

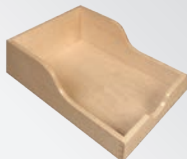
With complete flexibility you can design your storage & your style in the way that suits you best.

**SPECIES:** 20+ Stock Options to Choose From

**MIX & MATCH:** Designate frame widths and decorative profiles for both inside and outside edges, Panels style options in wood, metal or glass,  
Custom Finishes: Stains, Glazes and Paints, Distressed or Heirloom Finishes

**DRAWERS:** Variety of Species, Customizable Inserts and Configurations

AVAILABLE IN A VARIETY OF SPECIES, FINISHES AND LAYOUTS. SOFT CLOSE DRAWER GUIDES COME STANDARD.



Let your style  
compliment  
every room in  
your home.



*Cabinetry for the Home*





*Exquisite Entertaining*

*Comfort & Charm*



*Clean & Fresh*

ERIN JEAN  
AND CO.



*Sparkle & Shine*



*Together is our favorite place to be.*



Mix & Match: Stains | Paints | Glass & Mullion Panels | Door & Drawer Styles

# KITCHENS





## Want Drama?

Leave it in your design not in your process.  
From concept through completion our experience shines.

# KITCHENS





# KITCHENS & STORAGE





**Storage Solutions Customized to Your Needs**

Corner Drawers, Base Cabinet Pull-out, Double Wastebasket Drawer with Storage. Maximize storage space with cabinetry that is a perfect fit to your room.

Toe Kick Drawers, Sliding Drawer Inserts, Knife Rack & Lazy Susan Corner Units

## KITCHENS & STORAGE



Doors and drawer panels to conceal built-in appliances or a passage way to a walk-in pantry or working kitchen. Shelving and glass doors for showcasing your pretty things or easy access for everyday needs.

Configured storage solutions designed for convenience & accessibility.



## KITCHENS & STORAGE



*A well organized kitchen is a joy to work in.  
Pursue your culinary passions!*



# ISLANDS



## Continuity or Complimentary?

Islands allow you design flexibility- additional options for the placement of appliances or sinks, add a variance in your countertop surface and the option to interject a new color or wood species with your cabinetry... or "all of the above"!

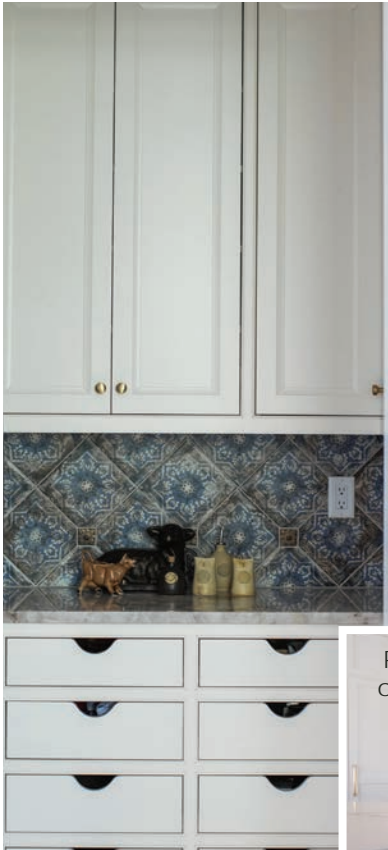


### Putting the Pieces Together

Our Showrooms feature a great selection of door and drawer styles in a variety of wood species as well as a wide range of standard paint colors. We also feature the top brands of stone, porcelain, wood, steel and laminate as well as an extensive offering of door and drawer handles & knobs. **Explore the Possibilities, we are here to help!**

# SHELVING & PANTRY





Passage doors for pantry or working kitchen access



## Wood Hoods

Yet another area to add distinction to your kitchen design. Truly a central focus for your room, hoods can be fashioned in any shape and size - add some curves for added interest or use it to unite the color scheme used on your cabinetry and island.



# BEVERAGE CENTERS





**Quench your Thirst**

Beverage Centers are one of our more popular requests. Wine & Spirits, Soft Drinks & Juice, or Coffee & Espresso, whatever your pleasure we can create a dedicated space to serve up your favorite drink. Beverage Centers also work to transition the area between kitchen, dining and living spaces and are a great way to add function and fashion to a nook or short wall.

# FURNITURE ACCENTS



## Crafted Like Fine Furniture

Our cabinetry is built with the finest materials and finishing techniques by skilled craftsmen and women. Trims, contours and detailed accents further enhance our work - Our cabinetry is fine furniture - built with care and built to last!



# LOCKERS & BENCHES





Comfortable seating to get lost in a book, open cubbies filled with decorative baskets, mesh lined drawers for wet mittens and hats, racks for shoes and boots and plenty of hooks. A beautiful accent to any room or point of entry.

# FIREPLACES & BUILT-INS





A seamless anchor to your living space, a perfect fit and feel that carries the design theme through your home for continuity and balance.

Showcase art or photos, storage for games & toys, space for TV's, electronics and gaming towers and solutions to hide all the cords and cables.

# BOOKCASES



Bookcases are crafted with adjustable shelving for those who like to change things up for the seasons or the holidays.



Show-off that giant screen... or not. We can build an entertainment center to fulfill your preferences. Whatever you choose, what won't be on display are the cords & cables.

# BAR





*Raise a toast for the Host*



### A Productive Environment

If you have to work or study at home, efficiency is key - having the right space will help you get done quicker so that you have more time to play.



# CLOSETS





### Storage with Style

Trays for jewelry and watches, racks for shoes and handbags, the perfect balance of hanging bars and adjustable shelving. Your favorite room in the house! Utilize every inch of space and make your mornings anything but routine.

# LAUNDRY



Raised platforms | Built in Ironing Boards | Custom Shelving and Drawer Configurations



Shelf with Clothes Pole | Hampers | Drying Rack Drawer & Mesh-Lined Drawers

## CRAFTING & HOBBY



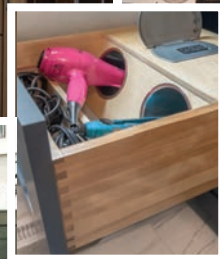
Customize your workspace and storage to accommodate your hobby or passion.



*Floating Spa*

# BATHROOM & VANITY







[VALLEYCABINETINC.COM](http://VALLEYCABINETINC.COM)

**STURGEON BAY DESIGN CENTER**

966 Green Bay Road, Sturgeon Bay, WI  
920.743.2243

**DE PERE / GREEN BAY DESIGN CENTER  
& MANUFACTURING FACILITY**

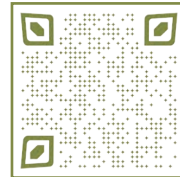
845 Prosper Street, De Pere, WI  
920.336.3174

**NEENAH DESIGN CENTER**

970 American Drive, Neenah, WI  
920.383.5580

**GERMANTOWN DESIGN CENTER**

W189 N11100 Kleinmann Drive, Suite 104, Germantown, WI  
262.345.5481



*Celebrating over  
Six Decades of  
Quality Craftsmanship*